



Beaufort County Public Works Stormwater Infrastructure Project Summary

Project Summary: Duncan Farms Channel

Activity: Routine/Preventive Maintenance

Narrative Description of Project:

Completion: Jan-14

Project improved 10,789 L.F. of drainage system. Bush hogged 9,813 L.F. of channel, lateral ditch and 976 L.F. of roadside ditch. Cleaned out 9,813 L.F. of channel and lateral ditch. Removed blockages from flowline. Repaired washouts. Jetted (2) access pipes.

2013-658 / Duncan Farms Channel	Labor Hours	Labor Cost	Equipment Cost	Material Cost	Contractor Cost	Indirect Labor	Total Cost
APJT / Access pipe - jetted	4.0	\$88.87	\$44.32	\$32.25	\$0.00	\$59.40	\$224.84
AUDIT / Audit Project	1.5	\$30.69	\$0.00	\$0.00	\$0.00	\$19.85	\$50.54
DLO / Ditch Layout	30.0	\$674.87	\$36.20	\$42.89	\$0.00	\$321.20	\$1,075.16
HAUL / Hauling	117.0	\$2,521.89	\$1,251.90	\$640.55	\$0.00	\$922.88	\$5,337.22
LM / Loading Materials	13.0	\$291.59	\$89.59	\$42.90	\$0.00	\$194.63	\$618.71
ODBH / Outfall ditch - bushhogged	98.0	\$2,002.06	\$1,376.31	\$353.57	\$0.00	\$692.16	\$4,424.10
ODCO / Outfall ditch - cleaned out	405.0	\$9,109.24	\$1,905.47	\$792.61	\$0.00	\$5,528.86	\$17,336.18
ONJV / Onsite Job Visit	53.5	\$1,709.24	\$255.71	\$212.42	\$0.00	\$1,159.51	\$3,336.88
PL / Project Layout	13.0	\$289.71	\$25.84	\$12.79	\$0.00	\$114.36	\$442.70
RB / Remove blockage from flowline	17.0	\$379.56	\$207.34	\$227.70	\$0.00	\$259.69	\$1,074.29
WSL / Workshelf - Level	20.0	\$420.87	\$36.20	\$74.58	\$0.00	\$264.60	\$796.25
2013-658 / Duncan Farms Channel Sub Total	772.0	\$17,518.60	\$5,228.88	\$2,432.26	\$0.00	\$9,537.13	\$34,716.87
Grand Total	772.0	\$17,518.60	\$5,228.88	\$2,432.26	\$0.00	\$9,537.13	\$34,716.87

Before



During



After



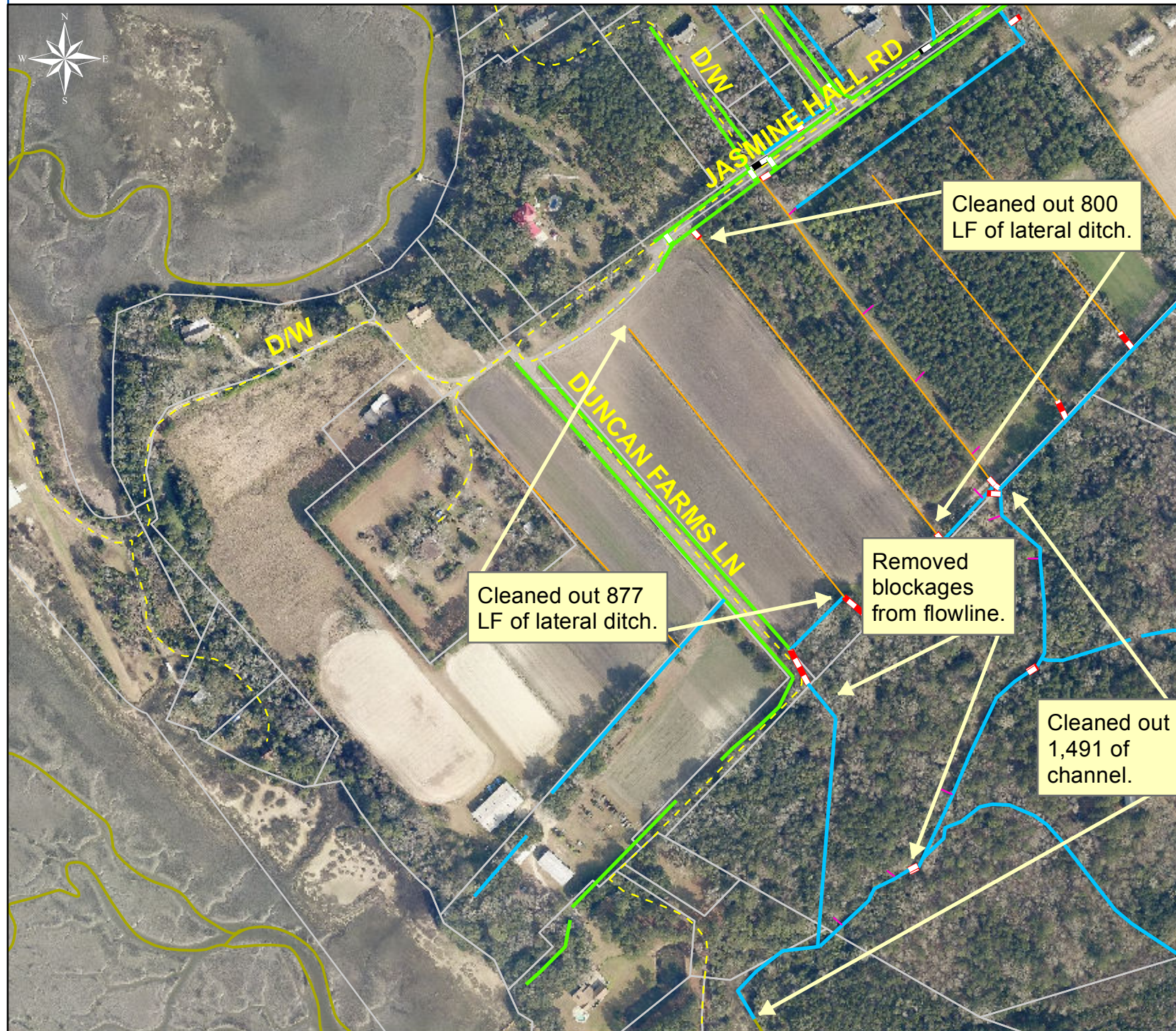
Project: Duncan Farms Map 2

Activity: Routine/ Preventive Maintenance

Project #: 2013-658

Township: Port Royal Island

Completed: January 2014



Legend

TYPE

- River
- Creek/Stream
- River/Creek/Marsh BANK
- Channel (fka Outfall)
- Channel Pipe
- Lateral
- Lateral Pipe
- Roadside
- Roadside Pipe
- Road Pipe
- Crossline Pipe
- Driveway Pipe
- Access Pipe
- Bleeder Pipe

0 95 190 380 570 760 Feet

1 inch = 362 feet

Prepared By: BC Stormwater Management Utility

Date Print: 2/27/14

File: C:/sethdata/projects/projectmaps/Duncan Farms 2013-658 Map2

Project: Duncan Farms Map 1

Activity: Routine/ Preventive Maintenance















Project #: 2013-658

Township: Port Royal Island

Completed: January 2014

Legend

TYPE

-  River
-  Creek/Stream
-  River/Creek/Marsh BANK
-  Channel (fka Outfall)
-  Channel Pipe
-  Lateral
-  Lateral Pipe
-  Roadside
-  Roadside Pipe
-  Road Pipe
-  Crossline Pipe
-  Driveway Pipe
-  Access Pipe
-  Bleeder Pipe

Cleaned out 4,075 LF of channel.

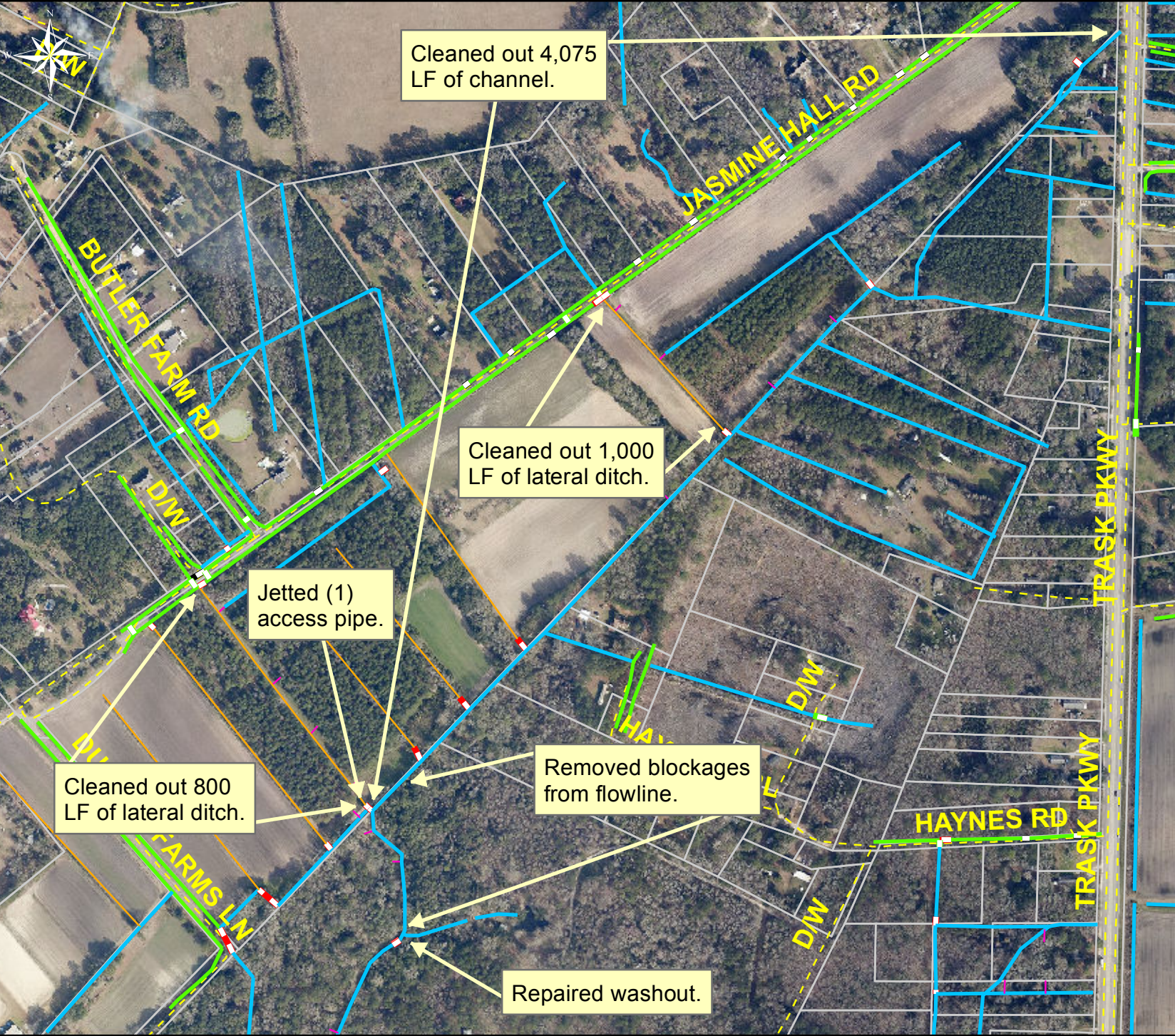
Cleaned out 1,000 LF of lateral ditch.

Jetted (1) access pipe.

Cleaned out 800 LF of lateral ditch.

Removed blockages from flowline.

Repaired washout.



1 inch = 500 feet

Project: Duncan Farms Map 3

Activity: Routine/ Preventive Maintenance

Project #: 2013-658

Township: Port Royal Island

Completed: January 2014



Legend	
TYPE	
	River
	Creek/Stream
	River/Creek/Marsh BANK
	Channel (fka Outfall)
	Channel Pipe
	Lateral
	Lateral Pipe
	Roadside
	Roadside Pipe
	Road Pipe
	Crossline Pipe
	Driveway Pipe
	Access Pipe
	Bleeder Pipe



1 inch = 220 feet

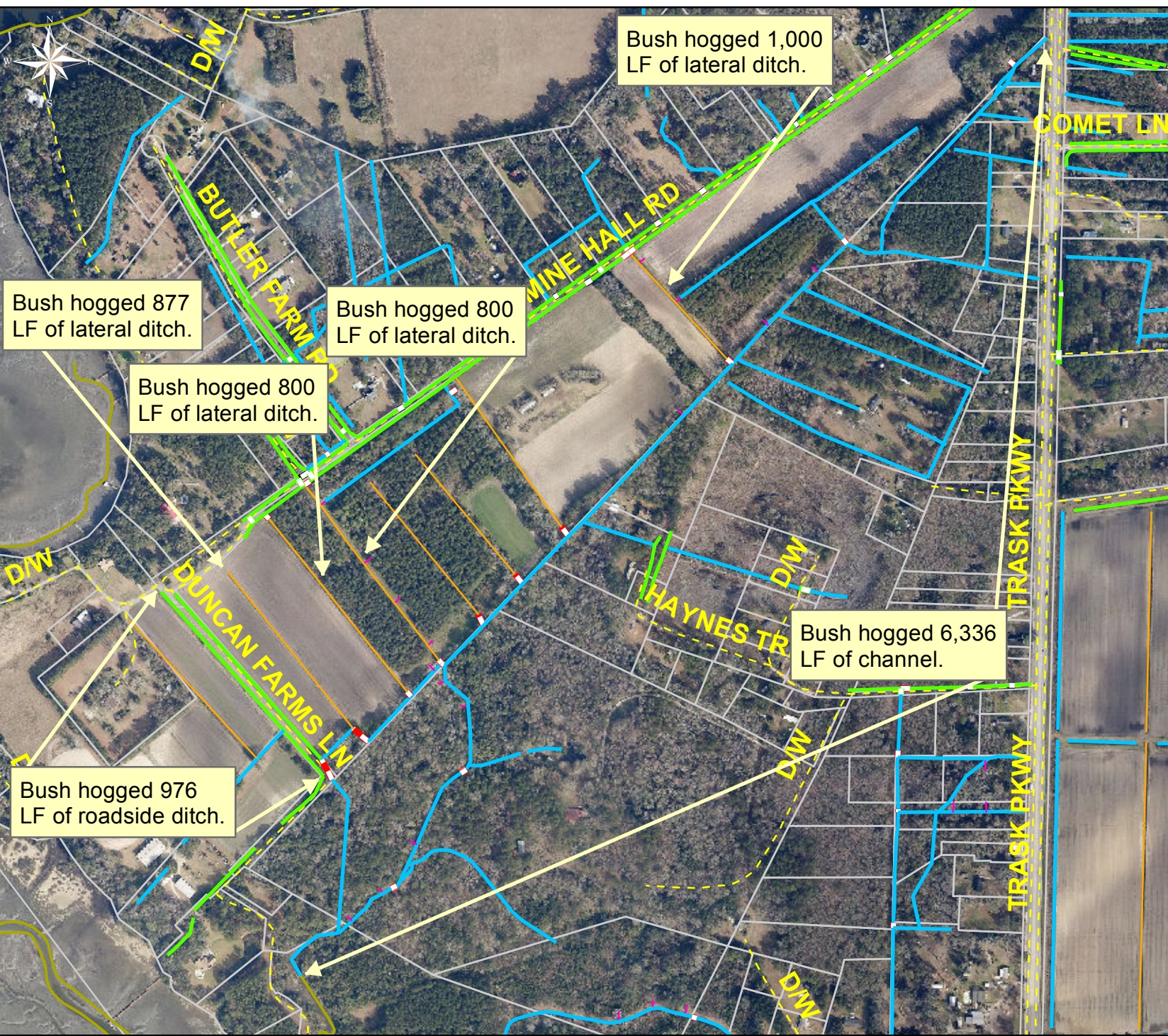
Project: Duncan Farms Map 4

Activity: Bush Hog

Project #: 2013-658

Township: Port Royal Island

Completed: January 2014



Legend

TYPE

- River
- Creek/Stream
- River/Creek/Marsh BANK
- Channel (fka Outfall)
- Channel Pipe
- Lateral
- Lateral Pipe
- Roadside
- Roadside Pipe
- Road Pipe
- Crossline Pipe
- Driveway Pipe
- Access Pipe
- Bleeder Pipe



1 inch = 617 feet